

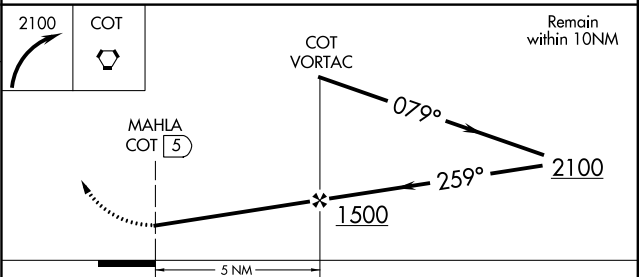
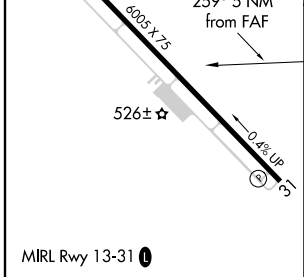
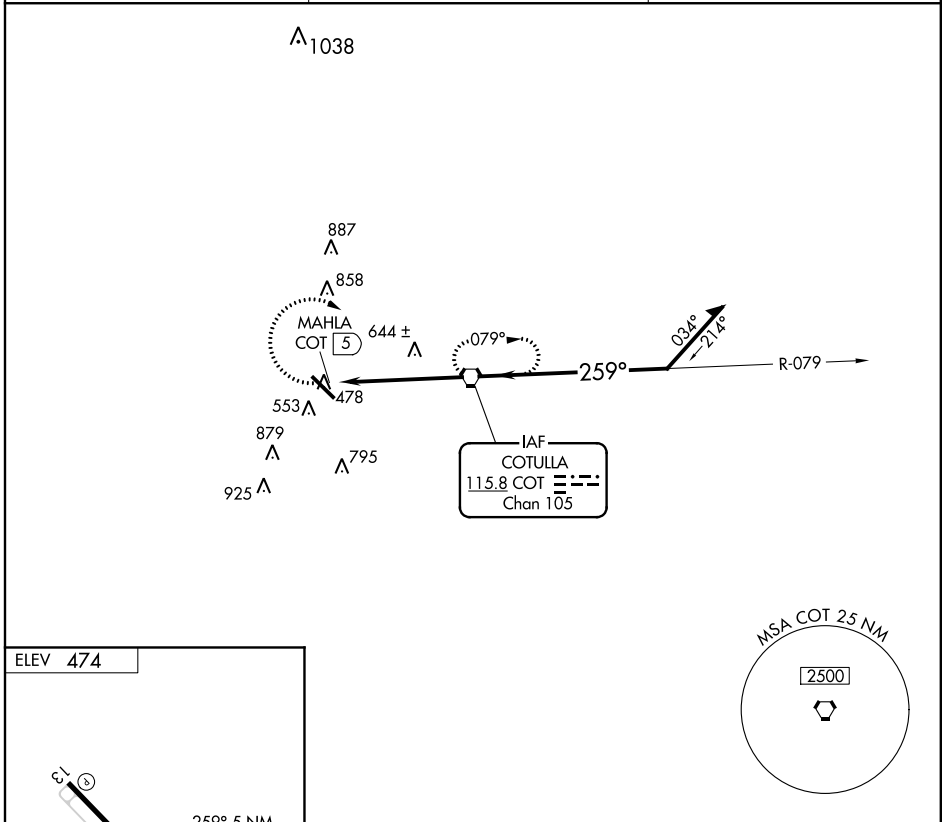
VORTAC COT 115.8 Chan 105	APP CRS 259°	Rwy Idg TDZE Apt Elev N/A N/A 474
---	------------------------	---

VOR-A
COTULLA-LA SALLE COUNTY (COT)

▽ If local altimeter setting not received, use Pleasanton Muni altimeter setting and increase all MDAs 120 feet.

▲ MISSED APPROACH: Climbing right turn to 2100 direct COT VORTAC and hold.

ASOS 118.32	HOUSTON CENTER 134.6 322.5	UNICOM 122.7 (CTAF) 0
-----------------------	--------------------------------------	---------------------------------



FAF to MAP 5 NM					
Knots	60	90	120	150	180
Min:Sec	5:00	3:20	2:30	2:00	1:40
CATEGORY	A	B	C	D	
CIRCLING	900-1 426 (500-1)	940-1 466 (500-1)	940-1½ 466 (500-1½)	NA	

SC-3, 20 AUG 2015 to 17 SEP 2015

SC-3, 20 AUG 2015 to 17 SEP 2015